

RUDDELL AUTO MALL

110 Golf Course Rd.
Port Angeles, WA 98362

Main Phone:

(360) 452-6822

Alt Phone:

(360) 452-8278



Roadside Assistance

(800) 462-8782



Schedule your Service on-line at:
www.ruddellautomall.com

Sales Hours

Monday - Friday
8:30am - 6:00pm
Saturday
9:00am - 6:00pm

Service Hours

Monday-Friday
7:30am - 6:00pm

Quicklube Hours

Monday - Saturday
8:00am - 6:00pm

Parts Hours

Monday-Friday
8:00am - 6:00pm

**Ask Us About The
Loyalty Rewards Card!**



 **THE BEST COVERAGE
IN AMERICA**

-  **100,000-MILE**
5-YEAR POWERTRAIN LIMITED WARRANTY*
- +
-  **100,000-MILES**
5 YEARS OF COURTESY TRANSPORTATION*
- +
-  **100,000-MILES**
5 YEARS OF ROADSIDE ASSISTANCE*

Now standard on every 2007 GM car and light-duty truck, a 100,000 mile/5-year transferable powertrain warranty with no deductible. You also get 100,000 miles/5 years of 24/7 roadside assistance, courtesy transportation, and much more.

*Whichever comes first. See Service Advisor for limited warranty details.



**Preferred
Maintenance Guide**

Since 1940

RUDDELL AUTO MALL



GMC



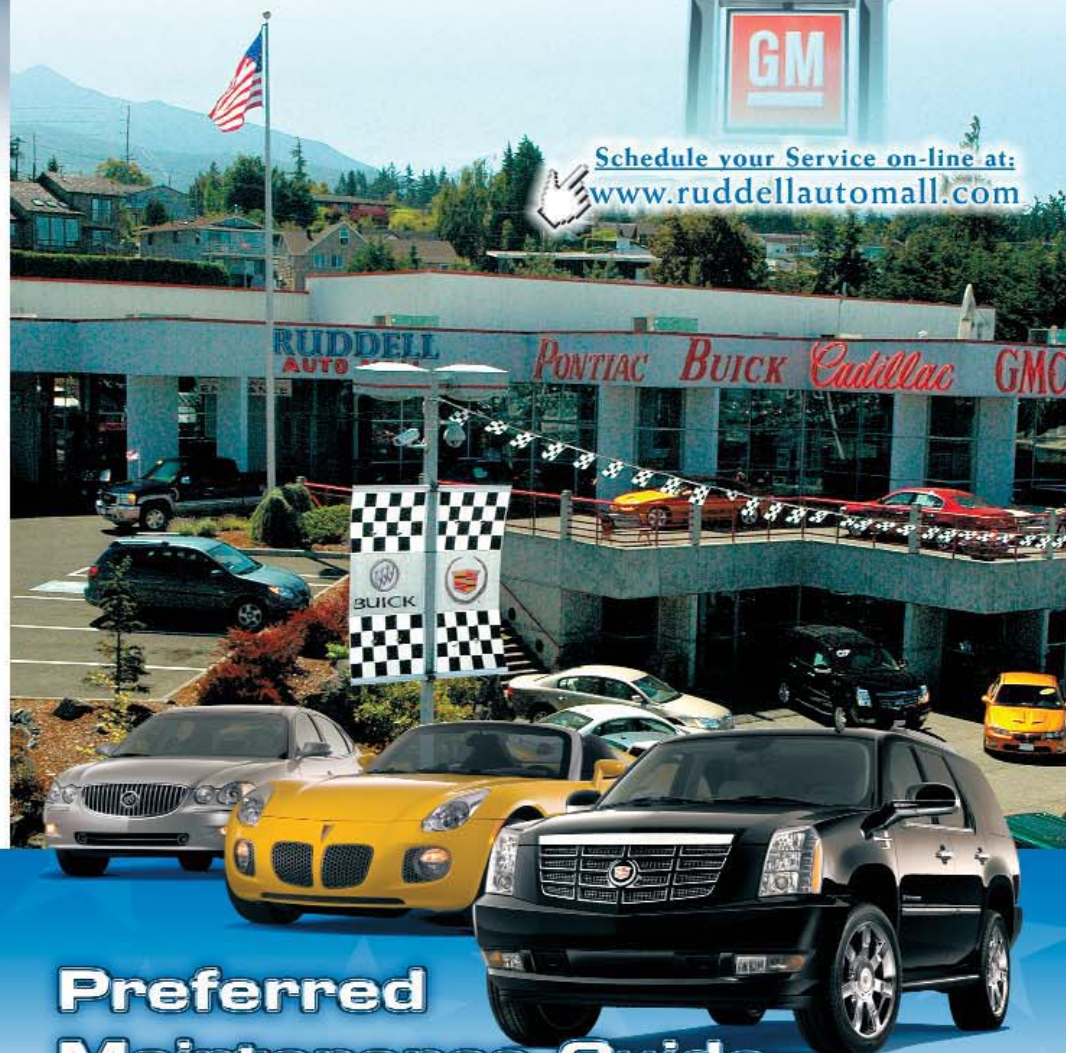
Goodwrench

PONTIAC
BUICK
Cadillac
GMC TRUCKS

RUDDELL AUTO MALL



Schedule your Service on-line at:
www.ruddellautomall.com



**Preferred
Maintenance Guide**

RUDDELL AUTO MALL

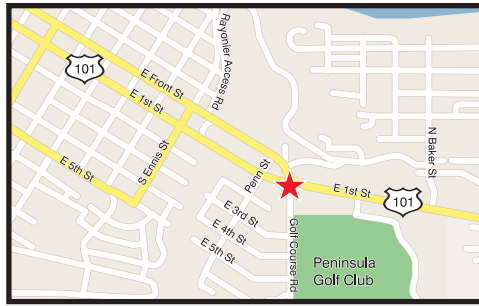


110 Golf Course Rd.
Port Angeles, WA 98362

Main Phone:

(360) 452-6822

 **Roadside Assistance**
(800) 462-8782



Alt Phone:

(360) 452-8278

 **Schedule your Service on-line at:**
www.ruddellautomall.com

About This Guide...

This vehicle maintenance guide indicates the scheduled maintenance required for your car, truck or SUV. The services listed in black type on all subsequent pages are the same operations contained in the manufacturers Scheduled Maintenance Guide (contained with owner guide). Proper maintenance guards against major repair expenses resulting from neglect or inadequate maintenance and may help increase the value you receive when you sell or trade your vehicle.

It is your responsibility to make sure that all of the scheduled maintenance is performed and that the materials used meet manufacturer engineering specifications. Make sure that receipts for completed maintenance work are retained with the vehicle and confirmation of maintenance work is always entered in this guide. While Pontiac, Buick, and Cadillac will not deny a warranty claim simply because there is no documentation, damage or failures due to lack of proper maintenance or neglect are not covered under warranty.

Appointments

Appointments are not necessary, but if you prefer, please call (360) 452-6822 or visit us online at www.ruddellautomall.com to schedule a time and day that is convenient for you.

Early Bird / After Hours Drop-Off

As a courtesy to our customers there is an early bird/after hours drop-off box located at the shop main door.

Shuttle Service

A shuttle service is available for your convenience to your home or place of work within a 25-mile radius.

Loaners

Loaner cars are available, with advance reservation and Loyalty Card, for customers having major services performed. Restrictions apply, ask your Service Advisor for more details.

Here are 500 more reasons to follow this guide:

\$500 CERTIFICATE

Five hundred dollars additional trade-in value

Name _____

VIN _____



This offer is only valid at Ruddell Auto Mall. \$500 is good toward your trade-in when all services are performed at and verified by Ruddell Auto Mall. May not be combined with any other offer. Must be presented at time order is written.

Not redeemable for cash. Redemption value not to exceed \$500

Parts and Accessories

So far, your GM vehicle has been perfect. Why stop now?

Genuine GM Parts and Accessories deliver the fit, reliability and performance you want. They also are covered by your factory warranty, giving you peace of mind to go along with great looks.

Does your GM vehicle deserve anything less?

Genuine GM Parts and Accessories will enhance the experience of owning your GM. A visit to the **Parts and Accessories Department** is well worth it.

Perhaps there is a particular accessory that will make your GM vehicle more personalized.

How about a gift for that special GM owner in your life?

All of the products in our **Parts and Accessories Department** are of the finest quality, just as GM owners have come to expect.

So, why not stop by today?

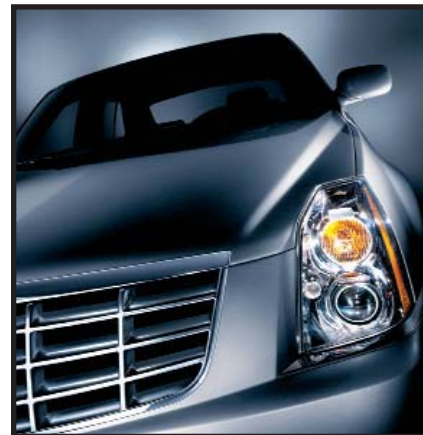


PARTS & ACCESSORIES SPECIAL

Purchase any part or accessory at our retail parts counter and receive...

10% OFF

Must present coupon when order is written.
Cannot be combined with any other offer. GM vehicles only.



Available at
Ruddell Auto Mall:

Full Service Detail Department
Window Tinting / Bedliners



© Copyright 2007. Main Street Marketing, Inc. All Rights Reserved.

No material from this publication may be reproduced in whole or in part without the express written permission of Main Street Marketing, Inc. 1-800-300-7730.

DEALER RECOMMENDED SERVICES

Transmission Service

Using a state-of-the-art equipment, one of our specially trained technicians will:

- Use a safe and effective cleaner to dissolve and suspend the varnish and gums in the transmission, valve body, torque converter, pan, filter element, transmission lines and transmission cooler.
- Rid the entire unit of all old fluid and suspended debris and install new ATF of the proper specification.
- Fortify the new fluid with seal conditioners, oxidation inhibitors and shift improvers.
- Road test your vehicle.



Automatic transmission fluid before (left) and after (right) service.



Valve body spool with heavy deposit build-up.

Valve body spool after BG Transmission Service.



Rack and pinion



Power steering spool valve with hardened, cracked seals.

Power Steering Service

One of our skilled technicians with specialized equipment will:

- Use a powerful cleaner to dissolve and suspend the varnish and gums in your vehicle's power steering unit.
- Rid entire unit of all old fluid and install new high-tech fluid for both conventional sector and rack and pinion.
- Road test your vehicle.

Our BG Power Steering Service will:

- ✓ Alleviate steering squeal caused by sticking valves.
- ✓ Correct that "jerky" feeling on the steering wheel.
- ✓ Help prevent fluid leaks.
- ✓ Reduce wear.



Grooves are worn into the soft metal of the spool valve housing by hardened seals. Metallic debris from such wear accumulates in the fluid causing premature component failure!

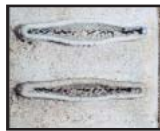
Cooling System Service

One of our specially trained technicians operating state-of-the-art equipment will:

- Remove rust, scale, sludge, and old coolant from your vehicle's entire cooling system.
- Restore coolant and necessary additives.
- Install special conditioners to protect your vehicle's cooling system.

Our BG Cooling System Service will:

- ✓ Balance coolant pH.
- ✓ Prevent foaming.
- ✓ Prevent overheating.
- ✓ Control rust and corrosion.
- ✓ Extend coolant life.



Rust, scale and sludge can plug cooling system fins, preventing proper circulation of coolant.



Severe corrosion can occur when additives that protect the cooling system have been depleted.

Engine Flush Service

Service Need: High engine temperatures caused by heavy stop-and-go driving conditions lead to thermal breakdown of engine oil. Not all of the oil is removed during a drain-and-fill oil change. Deposits are left behind and form sludge and varnish in the engine resulting in smoke from the exhaust and increased oil usage.

Solution: A BG Power Flush Machine safely and effectively cleans and removes oxidized particles and fluid contamination left behind from previous oil changes. Install new oil and filter along with BG MOA® to fortify new oil for optimum performance and engine protection.

Our BG Engine Flush Service will:

- Improved engine compression
- Increased power
- Increase fuel economy.

Dear Friend,

Welcome to the Service, Parts and Quick Lube Departments of Ruddell Auto Mall. It is our stated policy to treat every visitor to our dealership as an honored guest in our home.

Every day. Every time. Without fail. No exceptions. At Ruddell Auto Mall, we want to make your service experience as trouble-free as possible. We hope this maintenance guide will assist you in keeping track of your scheduled maintenance and when it should be performed. It is provided as a guide to assist you in getting the greatest ownership value from your General Motors vehicle, while helping to maximize its performance, safety and reliability.

If you ever have a question about anything, please do not hesitate to ask. We assure you that a member of our staff will be more than happy to handle your concern.

We look forward to seeing you again soon.!



CHECK OUT THE ADVANTAGES OF SERVICING YOUR VEHICLE AT **RUDELL AUTO MALL:**

- ✓ Factory-trained Service Advisors
- ✓ Factory-trained Technicians
- ✓ Genuine GM parts
- ✓ 17 Service bays
- ✓ Owner loyalty rewards
- ✓ Clean, spacious facility
- ✓ State-of-the-art equipment
- ✓ 3 GM World Class Technicians on staff
- ✓ Fast, while-you-wait service
- ✓ Everyday low prices
- ✓ Loaner cars available
- ✓ Local shuttle service available
- ✓ Best waiting area west of Seattle!
 - Comfortable waiting room
 - Customer computers with high speed internet
 - Big Screen T.V.
 - Putting green

ACDelco



**What NitroFill™
will do for you:**

Increases tire life up to 30%.

Improves fuel economy.

**Reduces the chance of tire
failure up to 50%.**

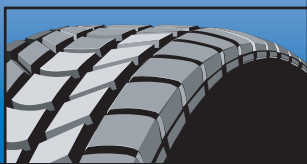
Improves braking and handling.

Reduces wheel corrosion.

Reduces running tire temperature.

Maintains proper tire pressure

See Your
Service Advisor
For Details.



DEALER RECOMMENDED SERVICES

BG Fuel/Air Induction System Service

Utilizing specialized tools, one of our trained technicians will immediately:

- Clean fuel injectors.
- Clean throttle body.
- Clean plenum and air-intake.
- Clean intake valves and ports.
- Remove combustion chamber deposits.
- Correct balance of fuel and air in system.

Our BG Fuel/Air Induction System Service will:

- ✓ Reduce emissions.
- ✓ Restore horsepower.
- ✓ Increase fuel economy.

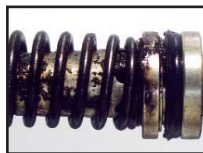


*Intake valve
with heavy deposit
build-up.*



*Intake valve
after service.*

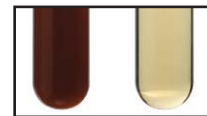
BG Brake Fluid Service



*Harmful deposits and varnish
build-up—resulting from worn-
out, oxidized brake fluid—are
apparent on this brake master
cylinder piston assembly.*

One of our skilled technicians will check the condition of your vehicle's brake fluid and, if necessary:

- Remove contaminated fluid from the entire hydraulic system.
- Replace the old fluid with Ultra-Dry BG DOT 3 or DOT 4 Brake Fluid, which is proven to prevent corrosion.



*Brake fluid before (left) and
after (right) service.*

The entire brake system will be inspected for leaks, master cylinder corrosion, worn pneumatic parts, harmful varnish build-up, broken or rusted bleeder valves, worn rotors and drums, and air in the brake lines.

BG Lubrication and Fuel Deposit Control Service

One of our skilled technicians will:

- Change engine oil and filter
- Lubricate chassis
- Top off fluids
- BG MOA®, a top-quality engine oil additive that fortifies oil, providing for optimum engine performance and long-lasting engine protection.
- BG CF5™, a unique high-tech formulation designed to provide deposit control throughout the fuel system and maintain "like-new" engine performance.



*BG MOA® prevented oil
oxidation and kept the engine
clean throughout a 240-hour
triple-length Sequence IIIIF
engine test.*



*Intake valves in test engine
were dirty after 3,000
miles/4,800 km of driving.*



*Intake valves were spotlessly
clean after one tankful
of fuel using BG CF5™
in the fuel tank.*

GM ENGINE OIL LIFE SYSTEM

Beginning with 2004 models, vehicle maintenance is determined through the General Motors ENGINE OIL LIFE SYSTEM. This system uses the Driver Information Center (DIC) and operates as follows:

When the CHANGE ENGINE OIL light in the (DIC) comes on, it means that service is required for your vehicle, as soon as possible, within the next 600 miles. It is possible that, if you are driving in the best conditions, the Engine Oil Life System may not indicate that vehicle service is necessary for over a year. However, your engine oil and filter must be changed at least once a year and at this time the system must be reset. Your GM Goodwrench dealer has GM-trained service technicians who will perform this work using Genuine GM Parts and then reset the system.

NOTICE: It is important to check your oil regularly and keep it at the proper level. Failure to keep your engine oil at the proper level can cause damage to your engine not covered by your warranty.

If the Engine Oil Life System is ever reset accidentally, you must service your vehicle within 3,000 miles since your last service. Remember to reset the system whenever the oil is changed.

Required services are listed as "Maintenance I" and "Maintenance II." Generally, it is recommended that your first service be Maintenance I, your second service be Maintenance II, and that you alternate I and II thereafter. However, in some cases, Maintenance II may be required more often.

MAINTENANCE I

(Use Maintenance I if the CHANGE ENGINE OIL light comes on within 10 months since the vehicle was purchased or Maintenance II was performed.)

- Change engine oil and filter
- Reset Oil Life System
- Lubricate chassis components
 - Front suspension
 - Ball joints
 - Steering linkage
 - Transmission shift linkage
 - Parking brake cable guides
- Visually check for any leaks or damage
- Inspect engine air cleaner filter change indicator. If necessary, replace filter.* (additional charge)
- Rotate tires and check inflation, pressure and wear.
- Inspect brake system (Visually inspect brake lines and hoses for proper hook-up, binding, leaks, cracks, chafing, etc. Inspect disc brake pads for wear and rotors for surface condition. Inspect other brake parts, including calipers, parking brake, etc.)
- Check engine coolant and windshield washer fluid levels and add fluid as needed.
- Perform any Additional Required Services based on vehicle mileage. (Additional charges apply)

* The U.S. Environmental Protection Agency and the California Air Resources Board have determined that the failure to perform this maintenance item will not nullify the emission warranty or limit recall liability prior to the completion of the vehicle's useful life. We, however, urge that all recommended maintenance services be performed at the indicated intervals and the maintenance be recorded.

MAINTENANCE II

(Use Maintenance II if the previous service performed was Maintenance I. Always use Maintenance II whenever the light comes on 10 months or more since the last service, or if the light has not come on at all for one year.)

- Change engine oil and filter
- Reset Oil Life System
- Lubricate chassis components
 - Front suspension
 - Ball joints
 - Steering linkage
 - Transmission shift linkage
 - Parking brake cable guides
- Visually check for any leaks or damage
- Inspect engine air cleaner filter change indicator. If necessary, replace filter.* (additional charge)
- Rotate tires and check inflation, pressure and wear.
- Inspect brake system (Visually inspect brake lines and hoses for proper hook-up, binding, leaks, cracks, chafing, etc. Inspect disc brake pads for wear and rotors for surface condition. Inspect other brake parts, including calipers, parking brake, etc.)
- Check engine coolant and windshield washer fluid levels and add fluid as needed.
- Perform any Additional Required Services based on vehicle mileage. (Additional charges apply)
- Inspect suspension and steering components. (Visually inspect front and rear suspension and steering system for damaged, loose or missing parts, signs of wear or lack of lubrication. Inspect power steering lines and hoses for proper hook-up, binding, leaks, cracks, chafing, etc. Visually check constant velocity joints, rubber boots and axle seals for leaks.)
- Inspect engine cooling system. (Visually inspect hoses and have them replaced if they are cracked, swollen or deteriorated. Inspect all pipes, fittings and clamps; replace with Genuine GM Parts as needed. To help ensure proper operation, a pressure test of the cooling system and pressure cap and cleaning the outside of the radiator and air conditioning condenser is recommended at least once a year.)
- Inspect wiper blades. (Visually inspect wiper blades for wear or cracking. Replace blade inserts that appear worn or damaged or that streak or miss areas of the windshield.) (additional charge)
- Inspect restraint system components. (Make sure the safety belt reminder light and all your belts, buckles, latch plates, retractors and anchorages are working properly. Look for any other loose or damaged safety belt system parts. If you see anything that might keep a safety belt system from doing its job, have it repaired. Have any torn or frayed safety belts replaced. Also, look for any opened or broken air bag coverings, and have them repaired or replaced.)
- Lubricate body components. (Lubricate all key lock cylinders, hood latch assembly, secondary latch, pivots, spring anchor, release pawl, rear compartment hinges, outer liftgate handle pivot points, latch bolt, fuel door hinge, cargo door hinge, locks and folding seat hardware. More frequent lubrication may be required when exposed to a corrosive environment.)
- Check transmission fluid level and add fluid as needed.

MULTI-POINT INSPECTION

Recommended at every visit ...

- Check and top up fluid levels:
 - brake
 - coolant recovery reservoir
 - manual and automatic transmission (if equipped with a dipstick)
 - power steering
 - window washer
- Inspect tires for wear and check air pressure, including spare
- Check exhaust system for leaks, damage, loose parts and foreign material
- Check battery performance
- Check operation of horn, exterior lamps, turn signals and hazard warning lights
- Check radiator, coolers, heater and air conditioning hoses
- Check windshield washer spray and wiper operation
- Check windshield for cracks, chips and pitting
- Inspect for oil and fluid leaks
- Inspect engine air filter
- Inspect accessory drive belts for proper tension, cracking and chunking
- Inspect half shaft dust boots, if equipped
- Check shocks and struts and other suspension components for leaks and damage
- Inspect steering and linkage
- Inspect accessory drive belt(s)
- Inspect clutch operation, if equipped



Here's why we do it ...

In addition to allowing us to perform scheduled maintenance services, we recommend that our GM factory-trained Technicians conduct a Multi-Point Inspection to ensure the continued safety and driveability of your GM-built vehicle. By performing this check on a regular basis, we increase our chances of preventing problems before they occur.

**Ask Us About The
Loyalty Rewards Card!**



3,000-MILE SERVICE (3 months)

- Oil and filter change
- Lube chassis
- Fill fluids
- Check tire pressure
- Multi-Point Inspection

HERE IS WHY WE DO IT:

The 3,000-mile scheduled maintenance interval is designed to get the optimum ownership value from your vehicle while helping to maximize its performance, safety and reliability. How much maintenance your vehicle requires depends on how you drive, as well as the conditions in which you drive. Depending on time or mileage, your vehicle may require more frequent oil changes.

R.O.# _____ Miles _____

Date _____ Auth. stamp _____

6,000-MILE SERVICE (6 months)

- Oil and filter change
- Lube chassis
- Fill fluids
- Check tire pressure
- Tire rotation
- Inspect air filter
- Complete brake inspection
- Inspect belts and hoses
- Inspect exhaust system
- Inspect steering and suspension, axle boots and power steering system
- Multi-Point Inspection

R.O.# _____ Miles _____

Date _____ Auth. stamp _____

9,000-MILE SERVICE (9 months)

- Oil and filter change
- Lube chassis
- Fill fluids
- Check tire pressure
- Multi-Point Inspection

R.O.# _____ Miles _____

Date _____ Auth. stamp _____

87,000-MILE SERVICE (87 months)

- Oil and filter change
- Lube chassis
- Fill fluids
- Check tire pressures
- Inspect belts and hoses
- Inspect exhaust system
- Multi-Point Inspection

R.O.# _____ Miles _____

Date _____ Auth. stamp _____



- Barbara Kattau
Office Manager
- Garrett Thomas
Sales Consultant
- Michele "Micki" Zozosky
Business Manager
- Scott Paulson
GM Technician
- Kelly Goss
Parts Department
- Duane Blank
Parts Manager
- Kerry Becker
Service Advisor
- Dave Sanders
Service Advisor
- Howard A. "Howie" Ruddell
Owners & President
- Justin Charon
Quicklube Manager
- Marlin Lanzl
GM Technician
- P. Michael Conney
Sales Manager
- Eleanor Hill
Accounting & Administration
- Stuart Miller
GM Service technician
- Mike Striegel
Service Manager

*Join our team! Apply online at
www.ruddellautomall.com*

90,000-MILE SERVICE (90 months)

- Oil and filter change
- Lube chassis
- Fill fluids
- Check tire pressures
- Tire rotation
- Replace cabin air filter
- Complete fuel system service with fuel filter replacement
- Cooling system inspection
- Complete brake inspection
- Inspect belts and hoses
- Inspect exhaust system
- Inspect steering and suspension, axle boots and power steering system
- Service air conditioning system
- Inspect wheel alignment (for optimum tire safety and life)
- Multi-Point Inspection

Dealer Recommended Services

- Cooling system service
- Fuel injection service



- Transmission flush with new filter

R.O.# _____ Miles _____

Date _____ Auth. stamp _____

75,000-MILE SERVICE (75 months)

- Oil and filter change
- Lube chassis
- Fill fluids
- Check tire pressure
- Complete brake inspection
- Complete fuel system service
- Replace cabin air filter
- Inspect cooling system
- Inspect belts and hoses
- Inspect exhaust system
- Inspect steering and suspension, axle boots and power steering system
- Inspect air conditioning system
- Inspect wheel alignment (for optimum tire safety and life)
- Multi-Point Inspection

R.O.# _____ Miles _____

Date _____ Auth. stamp _____

81,000-MILE SERVICE (81 months)

- Oil and filter change
- Lube chassis
- Fill fluids
- Check tire pressures
- Inspect belts and hoses
- Inspect exhaust system
- Multi-Point Inspection

R.O.# _____ Miles _____

Date _____ Auth. stamp _____



84,000-MILE SERVICE (84 months)

- Oil and filter change
- Lube chassis
- Fill fluids
- Inspect air filter
- Check tire pressures
- Tire rotation and balance
- Complete brake inspection
- Inspect belts and hoses
- Inspect exhaust system
- Inspect steering and suspension, axle boots and power steering system
- Multi-Point Inspection

R.O.# _____ Miles _____

Date _____ Auth. stamp _____

12,000-MILE SERVICE (12 months)

- Oil and filter change
- Lube chassis
- Fill fluids
- Check tire pressure
- Tire rotation and balance
- Inspect air filter
- Complete brake inspection
- Inspect belts and hoses
- Inspect exhaust system
- Inspect steering and suspension, axle boots and power steering system
- Multi-Point Inspection

R.O.# _____ Miles _____

Date _____ Auth. stamp _____

15,000-MILE SERVICE (15 months)

- Oil and filter change
- Lube chassis
- Fill fluids
- Check tire pressure
- Complete brake inspection
- Replace cabin air filter
- Inspect cooling system
- Inspect belts and hoses
- Inspect exhaust system
- Inspect steering and suspension, axle boots and power steering system
- Inspect air conditioning system
- Inspect wheel alignment (for optimum tire safety and life)
- Multi-Point Inspection

HERE IS WHY WE DO IT:

Keeping your vehicle in top condition and maintained according to factory requirements involves more than an oil change. As you can see, the 15,000-mile service includes the 3,000-mile interval. Due to city driving conditions, we recommend changing your vehicle's cabin air filter. The rubber on your wiper inserts may have deteriorated because of weather. Exhaust pipes, mufflers and hangers are inspected for cracks, deterioration or damage.

R.O.# _____ Miles _____

Date _____ Auth. stamp _____

18,000-MILE SERVICE (18 months)

- Oil and filter change
- Lube chassis
- Fill fluids
- Inspect air filter
- Check tire pressures
- Tire rotation
- Complete brake inspection
- Inspect belts and hoses
- Inspect exhaust system
- Inspect steering and suspension, axle boots and power steering system
- Multi-Point Inspection

R.O.# _____ Miles _____

Date _____ Auth. stamp _____

21,000-MILE SERVICE (21 months)

- Oil and filter change
 - Lube chassis
 - Fill fluids
 - Check tire pressures
 - Inspect belts and hoses
 - Inspect exhaust system
 - Multi-Point Inspection
- R.O.# _____ Miles _____
 Date _____ Auth. stamp _____

24,000-MILE SERVICE (24 months)

- Oil and filter change
 - Lube chassis
 - Fill fluids
 - Replace air filter
 - Check tire pressures
 - Tire rotation and balance
 - Complete brake inspection
 - Inspect belts and hoses
 - Inspect exhaust system
 - Inspect steering and suspension, axle boots and power steering system
 - Multi-Point Inspection
- R.O.# _____ Miles _____
 Date _____ Auth. stamp _____



**Featuring
Chevron Lubricants**

27,000-MILE SERVICE (27 months)

- Oil and filter change
 - Lube chassis
 - Fill fluids
 - Check tire pressures
 - Inspect belts and hoses
 - Inspect exhaust system
 - Multi-Point Inspection
- R.O.# _____ Miles _____
 Date _____ Auth. stamp _____



63,000-MILE SERVICE (63 months)

- Oil and filter change
 - Lube chassis
 - Fill fluids
 - Check tire pressures
 - Multi-Point Inspection
- R.O.# _____ Miles _____
 Date _____ Auth. stamp _____

66,000-MILE SERVICE (66 months)

- Oil and filter change
 - Lube chassis
 - Fill fluids
 - Inspect air filter
 - Check tire pressure
 - Tire rotation
 - Complete brake inspection
 - Coolant system inspection
 - Inspect belts and hoses
 - Inspect exhaust system
 - Inspect steering and suspension, axle boots and power steering system
 - Multi-Point Inspection
- R.O.# _____ Miles _____
 Date _____ Auth. stamp _____



69,000-MILE SERVICE (69 months)

- Oil and filter change
 - Lube chassis
 - Power steering system inspection
 - Fill fluids
 - Check tire pressure
 - Multi-Point Inspection
- R.O.# _____ Miles _____
 Date _____ Auth. stamp _____

72,000-MILE SERVICE (72 months)

- Oil and filter change
 - Lube chassis
 - Fill fluids
 - Replace air filter
 - Check tire pressure
 - Tire rotation and balance
 - Complete brake inspection
 - Inspect belts and hoses
 - Inspect exhaust system
 - Inspect steering and suspension, axle boots and power steering system
 - Multi-Point Inspection
- R.O.# _____ Miles _____
 Date _____ Auth. stamp _____

54,000-MILE SERVICE (54 months)

- Oil and filter change
- Lube chassis
- Tire rotation
- Fill fluids
- Inspect air filter
- Check tire pressures
- Complete brake inspection
- Inspect belts and hoses
- Inspect exhaust system
- Inspect steering and suspension, axle boots and power steering system
- Multi-Point Inspection

R.O.# _____ Miles _____

Date _____ Auth. stamp _____



Featuring
Chevron Lubricants

57,000-MILE SERVICE (57 months)

- Oil and filter change
- Lube chassis
- Fill fluids
- Check tire pressures
- Inspect belts and hoses
- Inspect exhaust system
- Multi-Point Inspection

R.O.# _____ Miles _____

Date _____ Auth. stamp _____

60,000-MILE SERVICE (60 months)

- Oil and filter change
- Lube chassis
- Fill fluids
- Check tire pressures
- Tire rotation and wheel balance
- Replace cabin air filter
- Complete fuel system service with fuel filter replacement
- Cooling system inspection
- Complete brake inspection
- Inspect belts and hoses
- Inspect exhaust system
- Inspect steering and suspension, axle boots and power steering system
- Service air conditioning system
- Inspect wheel alignment (for optimum tire safety and life)
- Multi-Point Inspection

Dealer Recommended Services

- Cooling system service
- Fuel injection service
- Transmission flush with new filter



R.O.# _____ Miles _____

Date _____ Auth. stamp _____



Goodwrench

30,000-MILE SERVICE (30 months)

- Oil and filter change
- Lube chassis
- Fill fluids
- Check tire pressures
- Tire rotation
- Replace cabin air filter
- Complete fuel system service with fuel filter replacement
- Cooling system inspection
- Complete brake inspection
- Inspect belts and hoses
- Inspect exhaust system
- Inspect steering and suspension, axle boots and power steering system
- Service air conditioning system
- Inspect wheel alignment (for optimum tire safety and life)
- Multi-Point Inspection

Dealer Recommended Services

- Cooling system service
- Fuel injection service
- Transmission flush with new filter



HERE IS WHY WE DO IT:

Your vehicle is now due for its first major service. All of the previous services have been performed. Now, our technicians use specialized equipment to be sure that all the mechanical, electronic and computer devices are working properly. At this time, we also recommend addressing your vehicle's heating and cooling system. Over time, your engine coolant becomes contaminated, losing its ability to protect your engine from freezing in cold weather conditions. Your anti-freeze also loses its ability to protect the metal components in your engine from rust and corrosion, causing premature engine and gasket failure. We completely remove old transmission fluid and contaminants before fresh fluid is added. Very expensive repairs could result from the lack of this required maintenance.

R.O.# _____ Miles _____

Date _____ Auth. stamp _____



33,000-MILE SERVICE (33 months)

- Oil and filter change
- Lube chassis
- Fill fluids
- Check tire pressures
- Multi-Point Inspection

R.O.# _____ Miles _____

Date _____ Auth. stamp _____

36,000-MILE SERVICE (36 months)

- Oil and filter change
- Lube chassis
- Fill fluids
- Inspect air filter
- Check tire pressure
- Tire rotation and balance
- Complete brake inspection
- Inspect belts and hoses
- Inspect exhaust system
- Inspect steering and suspension, axle boots and power steering system
- Inspect air conditioning system
- Multi-Point Inspection

R.O.# _____ Miles _____
 Date _____ Auth. stamp _____

39,000-MILE SERVICE (39 months)

- Oil and filter change
- Lube chassis
- Power steering flush
- Fill fluids
- Check tire pressures
- Safety inspection, includes seat belts
- Multi-Point Inspection

R.O.# _____ Miles _____
 Date _____ Auth. stamp _____

WE SELL TIRES!

CHECK OUT

OUR COMPETITIVE TIRE PRICING

42,000-MILE SERVICE (42 months)

- Oil and filter change
- Lube chassis
- Fill fluids
- Inspect air filter
- Check tire pressure
- Tire rotation and wheel balance
- Complete brake inspection
- Inspect belts and hoses
- Inspect exhaust system
- Inspect steering and suspension, axle boots and power steering system
- Multi-Point Inspection

R.O.# _____ Miles _____
 Date _____ Auth. stamp _____

45,000-MILE SERVICE (45 months)

- Oil and filter change
- Lube chassis
- Fill fluids
- Check tire pressure
- Complete brake inspection
- Replace cabin air filter
- Inspect cooling system
- Inspect belts and hoses
- Inspect exhaust system
- Inspect steering and suspension, axle boots and power steering system
- Inspect air conditioning system
- Inspect wheel alignment (for optimum tire safety and life)
- Multi-Point Inspection



**Featuring
Chevron Lubricants**

R.O.# _____ Miles _____
 Date _____ Auth. stamp _____

48,000-MILE SERVICE (48 months)

- Oil and filter change
- Lube chassis
- Fill fluids
- Replace air filter
- Check tire pressures
- Tire rotation and balance
- Complete brake inspection
- Inspect belts and hoses
- Inspect exhaust system
- Inspect steering and suspension, axle boots and power steering system
- Multi-Point Inspection

R.O.# _____ Miles _____
 Date _____ Auth. stamp _____



51,000-MILE SERVICE (51 months)

- Oil and filter change
- Lube chassis
- Fill fluids
- Check tire pressures
- Inspect belts and hoses
- Inspect exhaust system
- Multi-Point Inspection

R.O.# _____ Miles _____
 Date _____ Auth. stamp _____